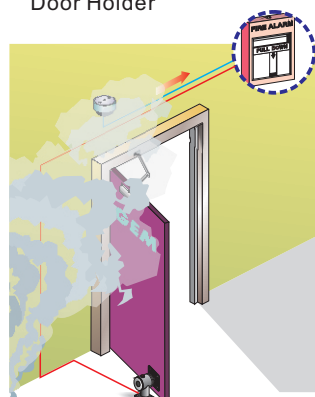
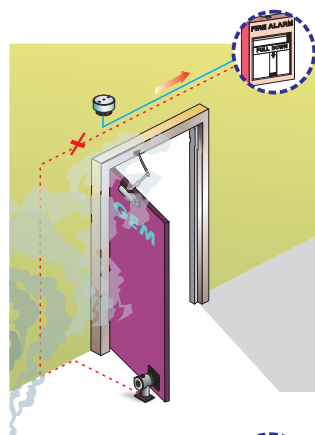


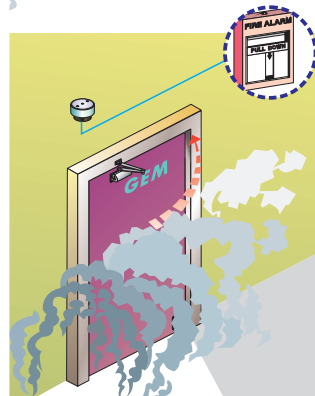
24 VDC (or 12 VDC) is the usual power source provided by the fire fighting system.



The fire fighting system activates the fire alarm when a fire is detected.



The fire fighting system cuts off the power.



The Electromagnetic door holder automatically releases the armature plate allowing the door to close and preventing the fire and smoke from spreading.

Statement

Electromagnetic Door Holders are suitable for and mostly found in large-scale buildings like hospitals, hotels, department stores, etc. They release doors and prevent the spreading of smoke out of a confined space in case of fire. The power source is supplied by the fire fighting system either 24 VDC (or 12VDC special order). The door holder is a Fail-safe device which automatically cuts off the power and closes the fire door when the fire fighting system detects a fire. The door can also be instantly released manually by using the release button.

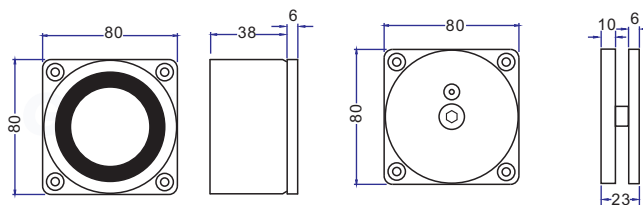
Warranty

The product is warranted against defects in material and workmanship while used in a normal service for a period of 5 years from the date of sale to the original client. The company policy is one of continual improvement; therefore the company reserves the right to change specifications without notice.



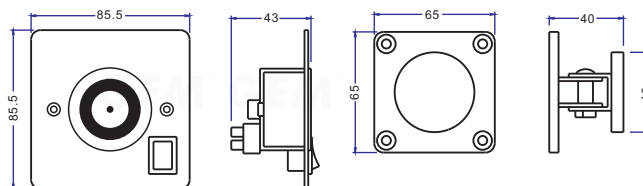
RM80

Operating Voltage: 24VDC
(12VDC is available by special order)
Current Draw: 160mA/24VDC
Holding Force: Up to 520 lbs (240Kg)



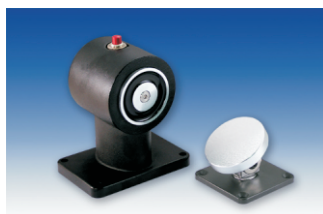
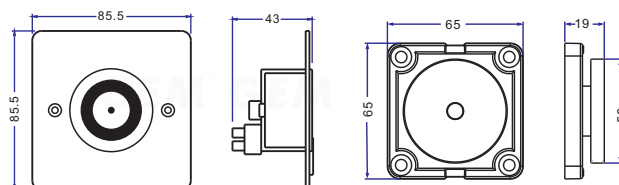
GD650S (Wall Mortise Mount)

British standard faceplate
Operating Voltage: 24VDC
(12V is available by special order)
Current Draw: 70mA/24VDC
150mA/12VDC
Push-off Button
Holding Force: up to 70 lbs.
Anti-Residual Magnetism function



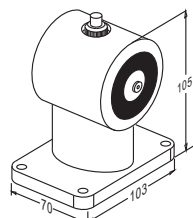
GD650S-24-100

(Wall Mortise Mount)
British standard faceplate
Operating Voltage: 24VDC
Current Draw: 82mA/24VDC
Holding Force: up to 100 lbs.
Anti-Residual Magnetism function
3 mm of horizontal adjustment
is allowed for the armature plate.



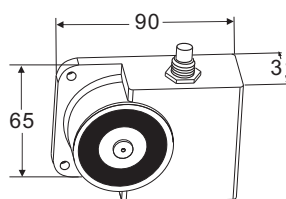
GD830F (Floor Mount)

Operating Voltage: 24VDC
(12VDC is available by special order)
Current Draw: 60mA/24VDC
Push-off Button
Holding Force: Up to 80 lbs
Anti-Residual Magnetism function



GD830S (Wall Surface Mount)

Operating Voltage: 24VDC
(12VDC is available by special order)
Current Draw: 60mA/24VDC
Push-off Button
Holding Force: Up to 80 lbs
Anti-Residual Magnetism function



GD870S (Wall Surface Mount)

Operating Voltage: 24VDC
(12VDC is available by special order)
Current Draw: 60mA/24VDC
Push-off Button
Holding Force: up to 80 lbs.
Anti-Residual magnetism function

